

Student presidents

Assn. takes action against Greenlee

The California State University and Colleges Student Presidents Association recently resolved to oppose the actions of Cal State L.A. President John Greenlee and San Francisco State President Paul F. Romberg in freezing "legally appropriated transportation funds" for the Jan. 18 March for Jobs in Sacramento.

The CSUCSPA agreed that the money held should be released immediately and turned over to the March for Jobs Coalition to repay debts incurred by the actions of

Greenlee and Romberg.

However, during the Feb. 6, meeting of the Associated Students Board of Directors, it was learned that the CSUCSPA had been advised by its attorney that Greenlee and Romberg were within their legal rights to veto the funds, therefore no action could be taken.

The BOD had originally appropriated \$650 for the march which was subsequently vetoed by Greenlee because he believed such an expenditure of student funds was illegal.

Due to misunderstanding

Bus station opening postponed 'til Wed.

By RON VROOMAN
U.T. Staff Writer

The Southern California Rapid Transit District's (SCRTD) Cal State L.A. express busway station will not open at 5 a.m. Tuesday as previously publicized, but will begin service at the same time Wednesday morning.

CSLA Public Affairs Director Robert Lerner attributed the discrepancy to a misunderstanding between officials of the RTD operations and public relations divisions:

"It's most likely a problem of the operations people not coordinating with the public relations people," he said. Lerner explained that the RTD must begin service on new routes by 5 a.m. of the routes' respective opening dates. He added that the district will not be prepared to begin service to CSLA on the San Bernardino Freeway bus lanes until Wednesday morning.

However, dedication ceremonies for the new facility will be held as planned at 8:30 a.m. Tuesday.

Music will be provided by the CSLA pep band.

Once the busway station opens, CSLA students living in the San Gabriel Valley, Pomona Valley, and Wilshire Boulevard regions will be able to ride express buses to campus for a flat rate of 25 cents, with no bus changeovers en route.

The Cal State L.A. campus, which has been the scene of two arsons and one attempted arson in the past three and-a-half months, was the setting of a macing incident yesterday.

The chemical, which campus police believed to be mace, was released in the Latin American Studies Center (in the Library North basement)

Dennis Garcia, a student who was watching the film at the time of the incident, said that a tear-gas-like chemical was emitted when someone broke a cannister in an adjacent hallway.



U.T. photo by Walter A. Saunders III

THERE'S NO FIRE—A crowd of curious onlookers appeared when Los Angeles firemen responded yesterday to a "macing" incident in the Latin American Studies Center, which occurred when someone reportedly broke open a cannister of chemical gas.

Feb. 22 - March 22

Paraprofessional training workshops to be held here

By ANNA CHRISTIAN
U.T. Staff Writer

Cal State L.A. will present a series of workshops on "Developing the Paraprofessional Counselor and Tutor" on five consecutive Saturdays beginning Feb. 22.

This program was developed through the coordinated efforts of five campuses: Cal State Dominguez Hills, CSLA, The Claremont Colleges, Pepperdine University, and Pasadena City College.

There will be five workshops.

◦ Workshop No. 1, on Feb. 22, is entitled "Training the Paraprofessional Counselor and Tutor." Its facilitator is Willa Robinson, a CSLA counselor.

◦ Workshop No. 2, on March 1, is entitled "The Development and Use of the Diagnostic Support Program for Students." Ralph Dawson, also a CSLA counselor, is the facilitator. Dawson was director of the CSLA Educational Opportunity Program from 1968-72.

◦ Workshop No. 3, "The Development of the Group Method in Problem Analysis and Solution," will have as its facilitator Salimu P. Moore, director of Operation Bootstraps, Honeycomb Child Development Center.

◦ Workshop No. 4, entitled "The Development and Use of the Study System in Academic Preparation,"

will be headed by Dr. Dorothy Blakley, a trainer of paraprofessional counselors.

◦ Workshop No. 5, "The Development and Use of the Tutorial Process in the Attainment of Academic Success," will be directed by Alan Nishio, director of the Cal State Long Beach EOP.

This program is designed to improve the quality of the paraprofessional counselor and tutor in Southern California institutions by presenting the best models for training and using paraprofessionals in the academic setting.

Each participant is expected to attend each of the five workshops making up the program. To insure skill development, the participants will be assigned to small groups that will take the workshops in different sequences.

The conference director is LeBaron Woodyard, who is currently the evaluations coordinator of the CSLA EOP. He has worked in the program for five years, with responsibilities that have ranged from being a paraprofessional counselor to the training of the paraprofessional counselor and tutor in the evaluation process of EOP.

Faculty, staff and students of the five campuses will be able to attend the conference at a reduced rate of \$35 per person instead of the regular rate of \$60 per person. The enrollment fee includes instruction, bibliography, and any subsequent material published.

Each participant will receive a certificate of completion at the conclusion of the program. Two quarter units of Education 474 may be earned for an additional fee of \$12. Students seeking credit must complete a registration packet at the first meeting.

For further information, students may contact the Office of Community Services, Adm. Tower 713B, ext. 3503.

EOP to propose use of paraprofessionals

By TONI GOODIN
U.T. Staff Writer

Tommy Allen, director of the Educational Opportunity Program (EOP), and Tomas Vasquez, associate director of EOP, will make a proposal for a para-professional training program for student advisers in EOP to be utilized during the fall quarter of 1975.

If the proposal is affirmed, they hope to set up the program in the Counseling Center with hopes that other programs similar to EOP will also take advantage of the opportunity to improve their advisement skills.

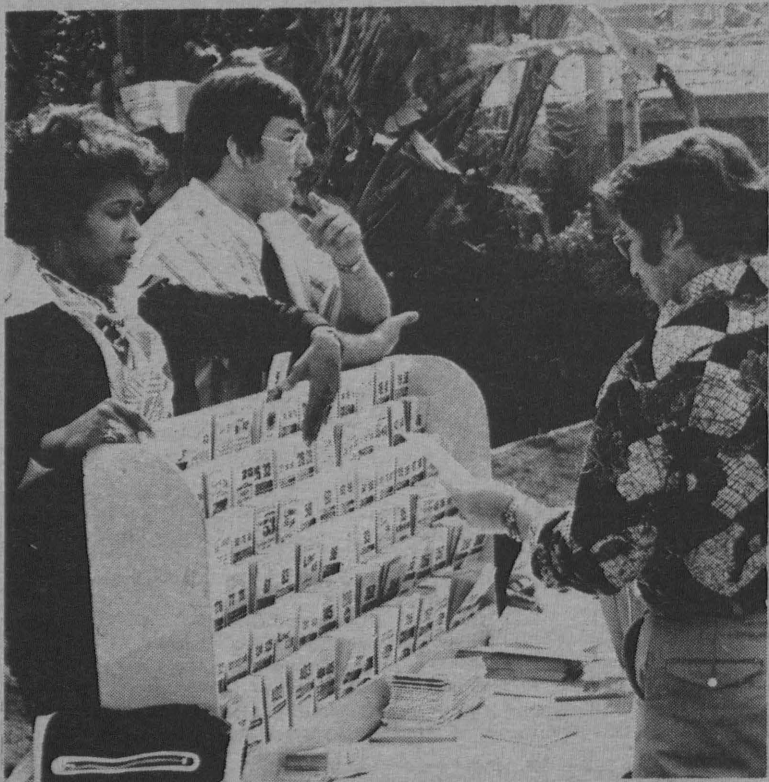
A committee consisting of five counselors: Paul Strongem, chairman of the committee, Ralph Dawson, Tom Baca, Mitz Kabota and Willa Robinson will submit a proposal for the immediate training needs of EOP to Elwood B. Trigg,

director of the Counseling Center, so that he may determine how to set up the program.

The following areas would be covered in such a training program:

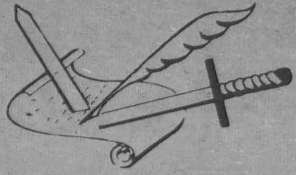
- General education requirements.
- Permanent record cards
- Campus resources
- Interview skills
- Crisis identification recognition
- Rules of the game

Long range plans involve a proposal to the Exxon Foundation's educational funding section which may fund the training program for the fall quarter of 1975.

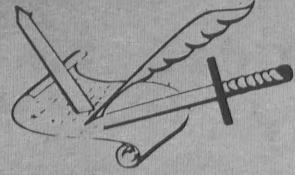


U.T. photo by Walter A. Saunders III

BUSWAY OPEN WEDNESDAY—In preparation for the opening of the new on-campus bus station, RTD customer information representatives Carrol Taylor and David Arada provide information for interested students.



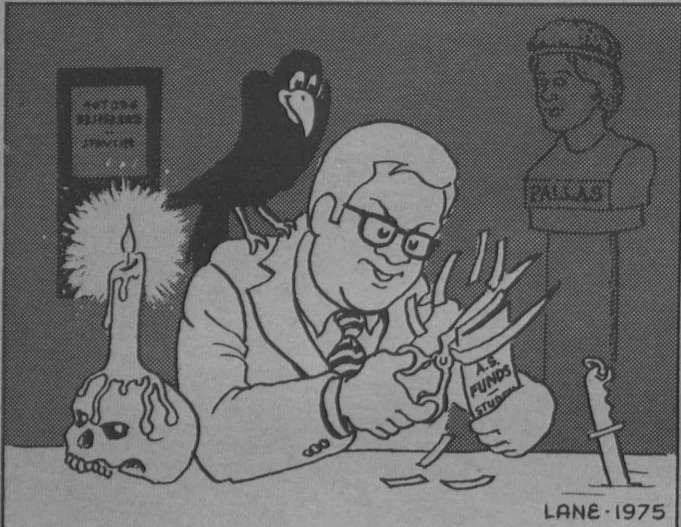
Opinion



VALENTINE'S DAY GREETINGS FROM THE U.T.!

To President JOHN GREENLEE

To Dean DAVID BOUBION



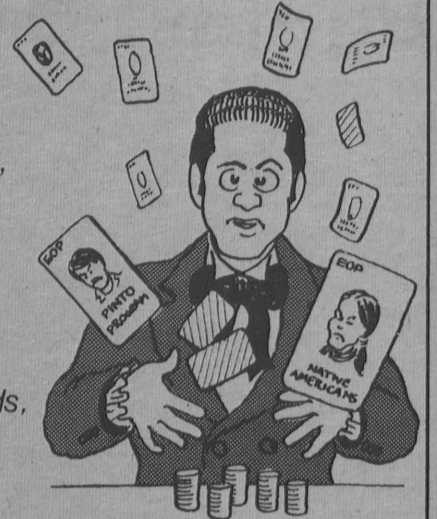
LANE-1975

Once there was a time of caring,
 Presidents of schools were sharing
 State and A.S. money
 With the students at the door;
 When their pupils asked for buses
 The Presidents would raise no fusses;
 They were proud: their kids
 were more involved
 Than they had been before,
 Never mind what they believed in,
 Nor the buttons that they wore.
 Quoth Doc Greenlee, "Nevermore."

Written and Illustrated by TIMOTHY O. LANE

Well, Ace, you've shuffled the EOP deck,
 You've finally reached your goal.
 Now you won't have to worry about students' rights,
 'Cause you've taken away their control.

You've managed to screw up the whole EOP,
 But it still isn't too late to stop:
 Just let some of us know when you're dealing the cards,
 And then deal them off of the TOP.



To Financial Aid Director SALVADOR VELASQUEZ



This card will show you how you rate,
 (Our F.A. checks are two weeks late),
 We think that you are tops, you bet,
 (Why can't we have our money yet?)
 As for complaints, we haven't any,
 (You've shafted us just once too many)
 So, Salvador, please take a bow,
 (We're coming to your office, NOW!)

© 1975 University Times

CLASSIFIED ADS

224-2696

FOR RENT

LARGE, MODERN ALL-Electric 1 of 2 Bedroom Apartments, Furnished/Unfurnished, \$155.00 and Up. Shared Plans Available \$57.00 and Up. Free Parking. Pool-Sauna Walk to Campus. 223-34836570M14

PRIVATE FAMILY HOME. Bedroom For Rent 4028 City Terrace Dr. 262-2571 Girls Only.6641F14

\$100 - Single - Furnished - One Adult. Four Blocks To Campus - One Block To Bus. Fenced Yard. 1502 Gravois, City Terrace. 789-3193(6647F20)

FOR SALE

AKC IRISH SETTER PUPPIES. Available after Feb. 15. Reserve one now! 695-4689 aft. 6 P.M.; on campus, days X3638(TODF15)

Nifty Newer Home! Excellent Condition. Featuring: Three Bedrooms, Two Baths, With Central Heating At Twenty-Eight Five. There's NO BETTER BUY! Call 227-1757 or 272-15566643M4

INSURANCE

LOWEST COST STUDENT AUTO & MOTORCYCLE INSURANCE. Full/Part time, Grad., Foreign, Single, Married, With/Without Family. Special Monthly Insurance. Bob Wallace or Jean Kerr 576-7901/283-8451-Alhambra(6575M14)

SPECIAL LOW AUTO INSURANCE RATES FOR SINGLE MALE COLLEGE STUDENTS AGE 18 OR OLDER TAKING 12 UNITS. CHECK YOURS 723-45916610M13

SERVICES OFFERED

CARPENTRY AND SOME Plastering And Painting To Your Satisfaction. 223-9698, Leslie6649F21

LET US TAKE THE WORRY AWAY! Proficient Typists— Term Papers, Charts, Graphs, Tables, Etc. WAGNER SECRETARIAL SERVICE, 1215 W. Jefferson Avenue. 731-33046636F17

TRAVEL

CHARTER FLIGHTS TO EUROPE With Char-Tours On Pan-Am. LA Departures. RESERVATIONS: TGT 17965 Sky Park Blvd. 32G Irvine, CA. 714-546-7015.6646F26

EUROPE-ISRAEL-AFRICA Student Flights All Year Round. Contact: ISCA, 11687 San Vicente Blvd. #4, L.A. Calif. 90049. Tel: (213) 826-5669, 826-09556595M11

SUMMER TOURS: Europe/Israel, Europe, South America, South Pacific, Orient. Eurailpasses, Charter Flights. Harold 986-2411 Daily.(6572M14)

LOWEST AIR FARES EUROPE, AFRICA, ISRAEL, ASIA: One Way And Round Trip, Since 1959 ISTD, 323 N. Beverly Drive, Beverly Hills, CA 90210. PH: (213) 275-8180, 275-8564 (7456A5)

PERSONAL

SUNNY...I'M SO GLAD I Found You...Sunshine.6650F14

If you don't think Scouting's worth your time, you don't know enough about Scouting.

Find out more. Write: Scouting, North Brunswick, New Jersey 08902

★★★★

All Letters to the Editor of the University Times are welcome. Letters will be printed as space allows and must carry the name, address and telephone number of their authors.

★★★★

PRE-LAW STUDENTS

REGISTER NOW FOR THE APRIL OR JULY REVIEW COURSE TO MAXIMIZE YOUR LSAT SCORE

Instruction exclusively in exam taking techniques used successfully by California pre-law students. Taught over 3 years in Los Angeles by practicing lawyers.

Cost \$85

COURSE FOR APRIL 19 BEGINS APRIL 3
 COURSE FOR JULY 26 BEGINS JULY 10

For Complete April and July Information
 Call Collect Today (213) 878-1920

We need you.

If you can spend some time, even a few hours, with someone who needs a hand, not a handout, call your local Voluntary Action Center. Or write to "Volunteer," Washington, D.C. 20013

The National Center for Voluntary Action.

advertising contributed for the public good

VOLUNTARY ACTION CAMPAIGN
 NEWSPAPER AD NO. VA-73-51
 45 LINES (1 col. x 3 1/4")

University Times

Editor in chief Terri Evans

Managing Editor Anna Jones
 News Editor Philip Iki
 Copy Editor Ron Vrooman
 Sports Editor Lolly Keys
 Fine Arts Editor Ann Nakao Jeffrey Weir
 Photo Editor Walter Saunders III
 Photo Lab Tech Keith Hall
 Staff Cartoonist Timothy O. Lane
 Production Supervisor Tim O'Donnell

Faculty Adviser Nick Beck
 Advertising Manager Betty Faulkner
 Production Staff:
 Brian Crotty Julie Yip Irma Rodriguez
 Staff Writers:
 John Merrill Deborah Buckelew
 Riza Estranero Jim Wenck James E. Moon
 Georg Spinnato Anna Christian Alan Hicks
 Richard Smith John McAllister C. Cash

Founded 1949. Published daily by the Associated Students of California State University, Los Angeles, Inc. at King Hall C3098, 5151 State University Drive, Los Angeles, California 90032. 224-3636, 224-3637, 221-4575. The UNIVERSITY TIMES reserves the right to reject any advertisement.

Represented for National Advertising by National Educational Advertising Services, 360 Lexington Ave., New York, N.Y. 10017

DISCLAIMER: Except as clearly implied by the advertising party or as otherwise expressly stated, advertisements in the University Times are inserted by commercial activities and ventures as identified in the advertisements themselves and not by the Associated Students, California State University, Los Angeles. Advertising material is printed herein solely for information purposes; such printing is not to be construed as an express or implied sponsorship, endorsement or verification of such commercial enterprises or ventures. Copyright 1975 Cal State L.A. University Times.

Calendar

CHARLES ROBLIN, Calendar Editor

GENERAL INFORMATION

VALENTINE'S DAY POEM—
It's half past the quarter and mid-terms are now

*And there are papers to write, and still, somehow
There are taxes to file and registration fees to pay...*

*Now look at your neighbor, in the same plight as you
With so little time and so much to do*

*Smile, you deserve the best, and heartily say
"This year, especially, Happy Valentine's Day."*

NO UNIVERSITY TIMES TUESDAY—Next issue Wednesday.

ADVISORY REFERENDUM ON STUDENT BODY FEES—Briefly stated, the referendum asks the question: Should Cal State L.A. students continue to pay \$20 a year to fund "instructionally-related activities" such as radio, television, music, drama, dance, publications, forensics, fine arts, co-ed and women's athletics, intramural and intercollegiate athletics? A "yes" vote will continue the \$20 student body fee. A "no" vote will require the voter to determine the percentage to be paid by the student body to fund instructionally-related activities.

COMING EVENTS

HOLIDAY—Monday is Washington's Birthday. University closed. No classes in session. Library closed. The University Times hopes you have a nice day.
ABSENTEE BALLOTS FOR THE ADVISORY REFERENDUM ON STUDENT BODY

FEES—Students who will not be able to vote at the referendum election during the week of Feb. 24-27 may pick up an absentee ballot from the Student Activity Center 123, Associated Students Office, next week, Monday-Thursday.

TODAY

SWIMMING AND DIVING—A triangular diving meet between Cal State L.A., USC, and UCLA. 3 p.m., Cal State L.A. pool.

TRACK AND FIELD—Cal State L.A. vs. Los Angeles City College. 2:30 p.m., athletic field.

BASEBALL—Cal State L.A. vs. Whittier College. 3 p.m., Reeder Field.

INTERNATIONAL

DINNER—Students are invited to attend an "international dinner," featuring the cuisine of 14 countries. The proceeds will go toward the foreign student scholarship fund. The event, sponsored by the International Club, will be held from 7-9 p.m. at the First Congregational Church, Los Robles and Walnut, Pasadena. Donations are \$2.50 a person, \$4.00 for couples and 75c for children under ten. Tickets are available at the door and at the Trident Lounge.

WRESTLING

TOURNAMENT—This is an off-campus event at Cal Poly Pomona. Contests begin at 4 p.m. This is a conference tournament featuring CCAA (California Collegiate Athletic Association) teams.

CLUB MEETINGS

Accion. Noon, S.T. F613.

Chemistry Club. 1 p.m., Phy. Sci. 612.

Chicanos for Creative Medicine. Noon, Bio. Sci. 335.

Fencing Club. 1 p.m., P.E. 214.

Model Cities. 1:30 p.m., Student Affairs Center 110.

North American Students Association (NASA). 12:30 p.m., International Culture House, 2258 Tuller Road.

Phi Beta Lambda, business organization. 12:15 p.m., S.H. C344.

Samahang Pilipino (Phillipine Circle). 1 p.m., Library So. 2098.

SATURDAY

BASEBALL—Cal State L.A. vs. Cal State Dominguez Hills. (This is a doubleheader.) Noon, Reeder Field.

TUESDAY

BUSWAY STATION

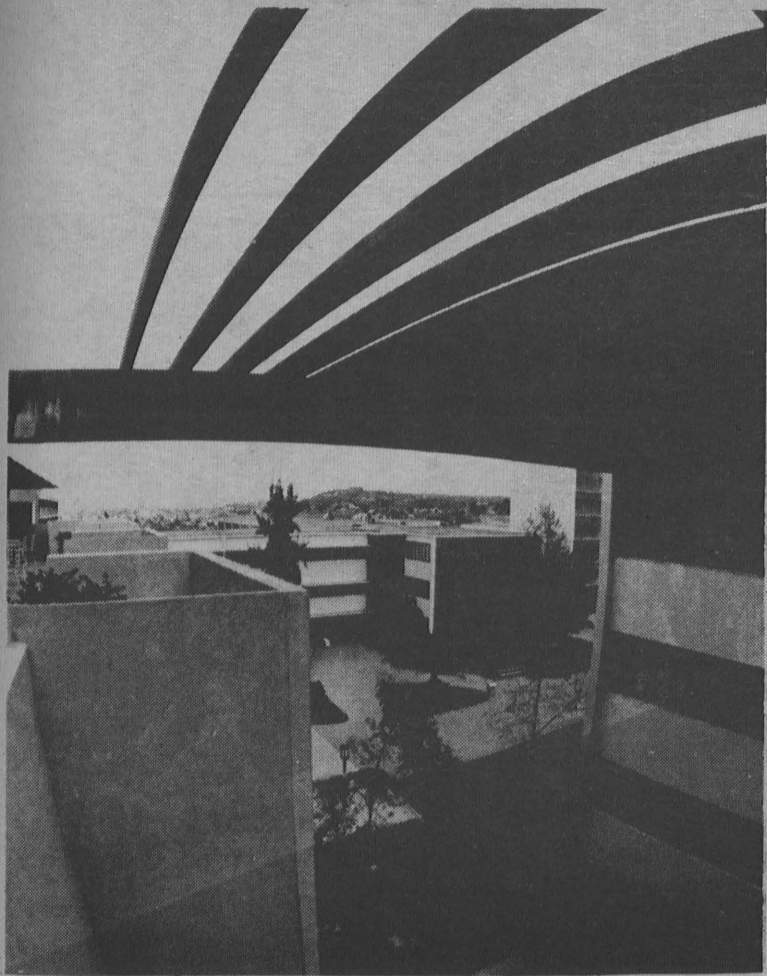
DEDICATION—The new Cal State L.A. busway station will be dedicated at 8:30 a.m. by officials of the Southern California Rapid Transit District, the city and county of Los Angeles, and other agencies. The public is invited. However, RTD express bus service **will not begin until 5 a.m. Wednesday.**

REGISTRATION—Class card-pulling:

• Preference Numbers 2 and 3. 10 a.m.-3 p.m. Bungalow L.

• Preference Numbers 4 and 5. 3-7 p.m. Bungalow L.

Continued on p. 4



U.T. photo by Pete Gerard

VIEW FROM THE TOP—The front of King Hall can be seen in this picture taken from the roof of the library. Once again Pete Gerard provides the U.T. with another fish-eye view of the campus.

Legislation specifies financial responsibility

By ANNA V. CHRISTIAN
U.T. Staff Writer

California has a new financial responsibility law, SB 1471, which was enacted to take effect Jan. 1.

This new law requires that all persons owning or operating a vehicle on public roads must show financial responsibility in the event of an accident resulting in over \$250 in property damage or bodily injury or death, regardless of fault.

There are approximately 2.5 million California motorists who do not now have insurance, a figure that has increased over the years from 8 per cent a few years ago to a recent high of 22.2 per cent. Clayton Jackson, lobbyist for the Association of California Insurance Companies, was quoted in the Jan. 3 issue of Insurance Week as saying that in some urban areas of California, especially those with high percentages of low-income drivers, the proportion of uninsured motorists has climbed to over 50 per cent.

It has been the policy of the state of California that those owning or operating motor vehicles on streets or highways should be financially capable of responding in the event of a traffic accident.

To achieve this objective, the Legislature enacted a financial responsibility law that has been operative for many years. However, after a recent California Supreme Court ruling established that a hearing would be required under this law, it became apparent that enforcement would be extremely costly and impractical. Therefore, a new financial responsibility law was enacted.

Every driver of and owner of a motor vehicle is required to have one of the following forms of financial responsibility:

• Insurance or a posted bond of \$15,000 for each person injured or killed, \$30,000 for two or more people injured or killed in one accident, and \$5,000 for property damage from one accident.

- A \$35,000 cash deposit with the state treasurer
- Self-insurance (applied only to owners of more than 25 vehicles)
- Certain other means generally not practical for the average driver

The financial responsibility law applies to accidents resulting in damage over \$250 or resulting in bodily injury or death of any person.

It requires that a report of the accident be filed within 15 days after the accident. Every driver, regardless of fault, must report and show proof of financial responsibility. Willfully failing, refusing or neglecting to report can result in suspension of a person's driver's license for one year or until the report is made.

Reports are made on form SR-1, which can be obtained from any office of the Department of Motor Vehicles, the Highway Patrol or local police department. This form must be filed in addition to any others required in an accident.

If a person drives or owns a car without meeting the law's requirements, he is guilty of an infraction and can be fined (not more than \$100) and then must obtain insurance, file proof with the department that he has it and keep this file maintained for three years.

Generally, enforcement and penalties will be carried out after an accident occurs. If a driver involved in an accident doesn't have insurance (or meet the requirement one of the other ways), he must obtain it and file proof as above.

Failure to comply with the above requirements can result in suspension of the person's driver's license. The suspension can remain in effect for three years or until the requirements are met.

The law also makes certain information from the reporting forms available to involved persons and representatives and increases the cost of license reinstatement after suspension from \$5 to \$6 effective July 1 of this year.

SEATS! SEATS! WE NEED EVEN MORE SEATS!

Not to worry!
At last we're at FLAGSHIP theatres EVERYWHERE!

"MADDER, FUNNIER, MORE INSPIRED THAN ANYTHING BEING DONE IN MOVIES TODAY!"
—Jay Cocks, Time Magazine

A MEL BROOKS FILM

YOUNG FRANKENSTEIN

starring GENE WILDER · PETER BOYLE
MARTY FELDMAN · CLORIS LEACHMAN · TERI GARR
also starring KENNETH MARS · MADELINE KAHN
with MICHAEL GRUSKOFF · MEL BROOKS · GENE WILDER · MEL BROOKS
and MARY W. SHELLEY · JOHN MORRIS

PG

Music and dialogue soundtrack available on ABC records & GRT tapes.

NOW AT FLAGSHIP THEATRES

VOGUE Hollywood 462-6621

GENERAL CINEMA THEATRES

AVCO CENTER CINEMA Westwood 475-0711

SOUTH BAY CINEMA #4 Redondo Beach 542-4361

PACIFIC THEATRES

LAKEWOOD CENTER Lakewood 531-9580

TOPANGA Woodland Hills 883-3300

CINEDOME 21 Orange 532-3328

AMERICANA CINEMA Panorama City 893-6441

WESCOVE CINEMA #1 West Covina 338-5574

UA TWIN A Westminster Mall 893-1305

PACIFIC DRIVE-INS

CIRCLE Drive-In Long Beach 439-9513

WHITTIER Drive-In Whittier 721-6131

EDWARDS Drive-In Arcadia 447-8179

CENTURY Drive-In Inglewood 673-1824

STUDIO CINEMA San Bernardino 885-6405

HARBOR TWIN CINEMA Costa Mesa 646-0573

ALHAMBRA CINEMA Alhambra 282-6136

NO PASSES ACCEPTED FOR THIS ENGAGEMENT

ACADEMY MEMBERS: Your card will admit you and a guest to any performance at the Avco, Vogue or Topanga.

Fine Arts

PLAY REVIEW

"When We Were Young," by the East-West Players, is a sensitive portrayal of Momoko Iko's study of a Japanese-American family 30 years after the relocation camps.

The play delves into the innermost feelings of each character. The often sharp confrontations between family members is softened by the apparent love and affection the family has for each other.

The play is centered in contemporary times in Seattle. The family consists of Yukii, his wife Keiko, their son and daughter, Ben and Susan, and a grandmother (Bachan).

The play succeeds in weaving the characters and events into a clash between generations, complicated by the heritage of a Japanese-American family. Memories of the concentration camp experience play an important role in the parents' striving for material wealth, while their children, now young adults, feel that their mother and father have not faced up to society's racism and violence.

In this atmosphere, the young daughter comes home from college pregnant, and the entire family goes into a tortuous questioning of values.

Yukii is played by Yuki Shimoda, a veteran actor with East-West Players. He gives the outstanding performance necessary to portray the sensitive character of Yukii.

Nobu McCarthy does a tremendous job as Keiko, the loving wife and mother who finds herself divulging the innermost resentments and bitter memories of the past to her astonished family.

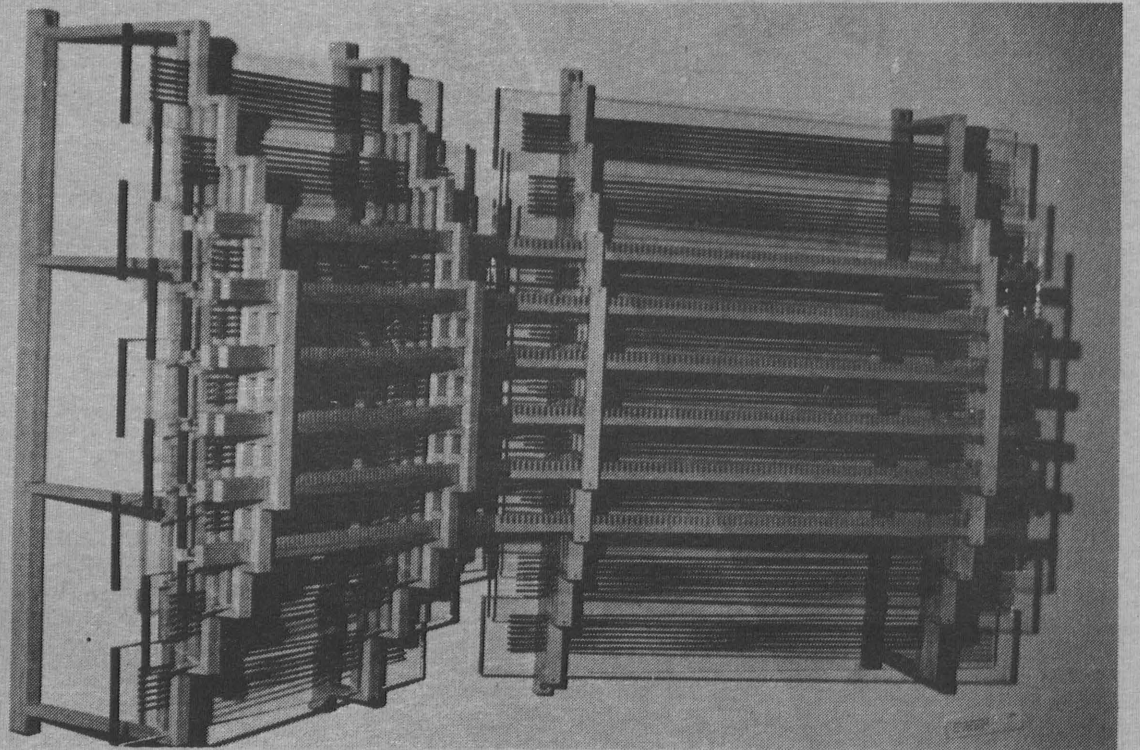
But it is Joe, the white bigot, played by J.D. Nichols, who is most memorable. His ingratiating mannerisms, his habit of parking himself in Yukii's home with a can of beer in hand and the bigotry he practices against Jeff make Nichols' performance so believable.

Momo Yashima gives a fine portrayal of the troubled and idealistic Susan, who acts as a catalyst for the family crisis.

Keone Young, who plays Ben, is a skillful actor whose cool and rakish performance gives balance to the seriousness of the other characters.

"When We Were Young" will run through February: Friday, Saturday, Sunday at 8:30 p.m., East-West Players, 4424 Santa Monica Blvd., 660-0366.

—Ann Nakao



U.T. photo by Walter A. Saunders III

CLASSY GLASS—Pictured is "Untitled construction—wire, glass, wood," part of the Claude Kent exhibit at the Art Gallery in the Fine Arts Building, which will run through Feb. 27.

* Calendar *

Continued from p. 3

LIBRARY FILM—"Un chein andalou" (Andalusian Dog.) This is one of the most famous 'avant-garde' films. Produced, written and directed by the famous painter Salvador Dali, the film was made to satirize the pretentious formalities of the avant-garde films of the 1920s. 11:30 a.m. Library So. 2097.

ART GALLERY SHOW—This is the last week to view "Sculptured Designs With An Architectural Connotation" by Claude Kent, artist/professor from Cal State Fullerton. (Show closes Thursday at 5 p.m.) Hours: Monday-Thursday, noon-5 p.m. E.A. Art Gallery.

CHEMISTRY—"Informational Analysis Using Lanthanide Shift Reagent" by Dr. K. Servis, University of Southern California. 4:30 p.m. Phy. Sci. 306.

WOMEN'S ATHLETICS—Two events...Basketball and Tennis.
 ° Basketball. Cal State L.A. vs. USC. 6:30 p.m. Gym.
 ° Tennis. Cal State L.A. vs. Cal State Long Beach. 2 p.m. Tennis Courts.

CLUB MEETINGS (Tuesday)

Alpiners, 11:30 a.m. Phy. Sci. 200.

Baptist Student Union. 11:45 a.m. Library No. Basement 562.

Beta Alpha Psi, business and economics tutorial lab. Noon. S.H. C168.

Black Action Committee (BAC). 11:40 a.m. K.H. B 1013.

Chicano Studies. Noon. S.H. C356.

Finance Club. Noon. S.T. F712.

Karate Kai. 6-7:30 p.m. P.E. 214.

KBLA (Kampus Broadcasting Los Angeles). Noon. Inferno, adjacent to the Main Cafeteria.

Recreation Majors. 12:15 p.m. P.E. 134.

Revolutionary Student Brigade. 7-10 p.m. K.H. B2011.

The University Times regrets the inaccuracy of a headline on Wednesday, which mistakenly described the "Wayward Way" as a modernized version of the original play. The production is being presented in its original version, tailored to 19th century audiences in a style called "Del Sarte."

Weekend Highlights

The County Art Museum is presenting its 5th International Children's Film Festival Feb. 15 through March 9. Approximately 20 live-action and animated short films for children six to 11 will be screened every Saturday afternoon at 1 and 3:30, and every Sunday at 1. Live entertainment will precede each screening on the plaza in front of the Leo S. Bing Theater, located at 5905 Wilshire Blvd. Price of admission is \$2 for adults, and \$1 for children.

If you're in the mood for a little history, drop by the Natural History Museum in Exposition Park, and take in "Meet George Washington" Saturday at 2 p.m. Gorgeous George comes back to life on the Delacour Auditorium screen, wooden teeth and all.

The Music Center presents "Student Stars at the Philharmonic," in the Dorothy Chandler Pavilion, Saturday at 10 a.m.

Teen-age students Monty McGovern, Lee Greenwald, and Nancy Wu, winners of the third annual Symphonies For Youth competition, are the featured soloists on Saturday's program. Works of Bach, Mozart, Handel and Ravel highlight this week's concert, which is under the direction of Sidney Harth.

The Inner City Cultural Center showcases the Black Brasil Festival throughout the month, providing a wide exposure to native Brazilian entertainments. The Cultural Center, located at 1308 S. New Hampshire Ave., is featuring exhibits, plays, lectures and an all-night carnival (tomorrow night) in an effort to capture the authentic flavor of Brazil. Prices vary according to the particular activity, but are well within student-range. For further information, call 387-8289. The Festival runs through Feb. 23.

NOW YOU CAN SEE BIG LEAGUE VOLLEYBALL!

Watch the most exciting volleyball ever played in this country. See the fastest action—former top college players, All-Americans and Olympic stars.

SAN DIEGO WAVE VS. SANTA MONICA-LONG BEACH SAILS
LOS ANGELES FEET VS. SANTA BARBARA CLIPPERS

7:30 P.M. SUNDAY, FEBRUARY 16th,
LOS ANGELES SPORTS ARENA

Tickets \$2.00, \$2.50, \$5.00

This program conducted in cooperation with the United States Volleyball Association.